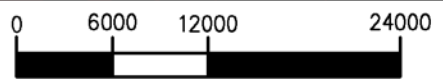
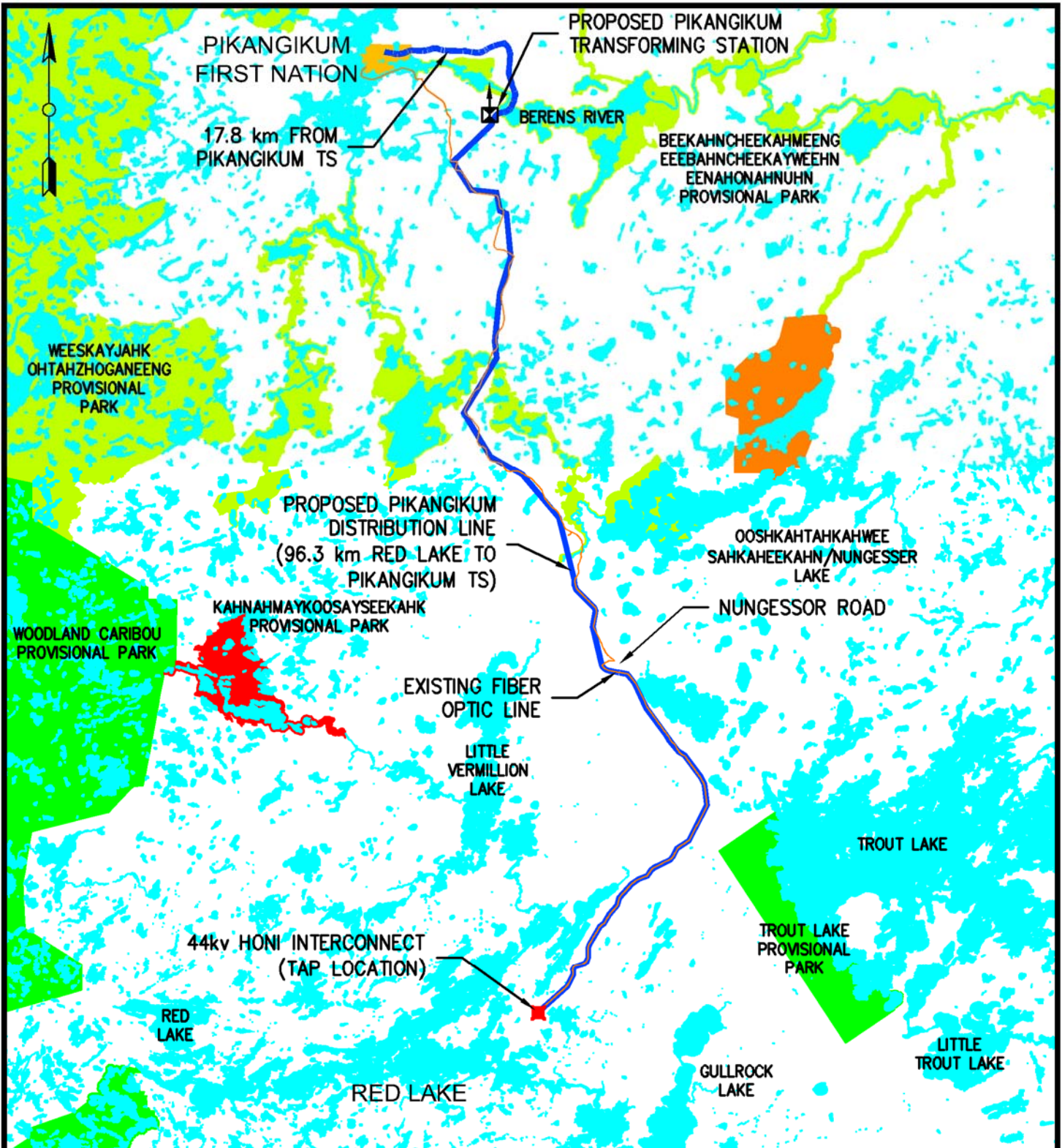

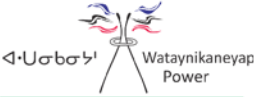


[alovato] [Feb 14, 2017 - 1: 21pm] [\\Den-fs-eng\engineering\TRANSMISSION\Canada\Ontario - Pikangikum 21265\DWG\INTERNAL\SERIES 7\EXHIBITS\EXH-01.dwg]



SCALE: 1=12000

THIS DRAWING IS THE PROPERTY OF RES AMERICA CONSTRUCTION INC. AND NO REPRODUCTION MAY BE MADE IN WHOLE OR IN PART WITHOUT PERMISSION.  
 FIELD DEVIATIONS FROM THIS DESIGN ARE NOT PERMITTED WITHOUT DOCUMENTATION THROUGH A TEF (TECHNICAL ENQUIRY FORM) APPROVED BY THE ENGINEER.

PREPARED BY: 		PREPARED FOR: 				PROJECT NO: 21265	
<b>PIKANGIKUM DISTRIBUTION LINE</b>							
ISSUE	DATE	DESCRIPTION	CHKR	APPD	DRAWING NUMBER: <b>EXH-01</b>		
C	021317	UPDATED SUBSTATION LOCATION	AL	GD			
B	091516	UPDATED END OF FEEDER LOCATION	AL	CC			